

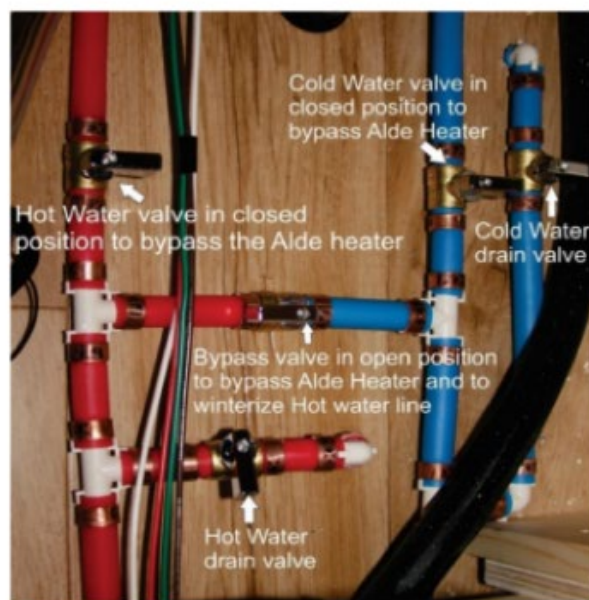
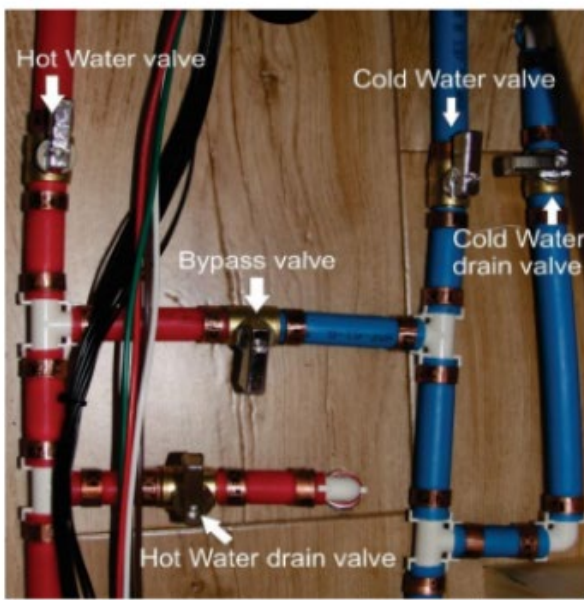
## DRAINING WATER FROM 2020 T@B 320S BOONDOCK LITE

1. Open fresh water tank valve and drain, drain is behind the step under the door.
2. When water stops draining, lower the tongue to the lowest position to fully empty tank, and then close drain.
3. Turn on pump, open all faucets, hot then cold
  - Kitchen sink
  - Bathroom shower
  - Toilet
  - Outside Shower
4. Leave faucets open until no more water flows out.
5. Flip the Alde safety relief/drain valve switch (flat, yellow, plastic tab resting on top of a blue pipe) for hot water tank to up position.
6. Turn water line valves to winterizing mode.

U - Q - L and S floor plan T@BS

Valves are in camping season mode

Valves are in winterizing mode after water was drained from the lines  
*(only needed if you're using RV antifreeze to winterize)*



7. Raise tongue of trailer to highest position and let water drain from valves at the rear driver side of the camper.
8. Level the trailer.
9. Open black water tank and drain into bucket.
10. Open grey water tank and drain.
11. Open city water connection, remove screen, hold button until water stops coming out.

## WINTERIZING THE 2020 T@B 320S BOONDOCK LITE

**Note:** NuCamp RV has not endorsed nor approved this procedure. Follow at your own discretion.

1. Requires 4 gallons of RV antifreeze (make sure it's the pink non toxic stuff and that it's safe for all RV plumbing).
2. Pour 3 gallons of antifreeze into fresh water tank.
3. Turn on pump.
4. Unscrew the bathroom showerhead and outside showerhead and drain the hoses, reattach afterwards.
5. Turn on all faucets one at a time, hot then cold.
  - Kitchen sink
  - Bathroom shower
  - Toilet
  - Outside Shower
6. On the last faucet or toilet, leave open until air is coming out.
7. Drain excess antifreeze from the fresh water tank back into a jug using the valve behind the step under the door, lower the tongue to the lowest position to fully empty.
8. Pour approximately 2 cups of antifreeze into sink drain, shower drain, toilet - with flush open and then with flush closed.
9. Quickly open and then close both the black water dump valve and grey water dump valve while leaving the cap on.

**Complete!**